



MISSOURI
LEGISLATIVE ACADEMY

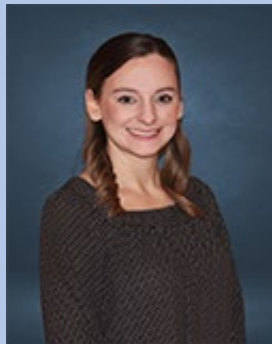
Missouri Legislative Academy Team



**Anthony
Ferrell**



**Brian
Flowers**



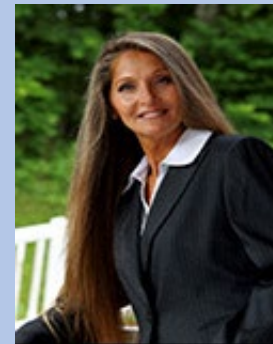
**Haylee
Musso**



**Clay
Stanton**



**BJ
Tanksley**



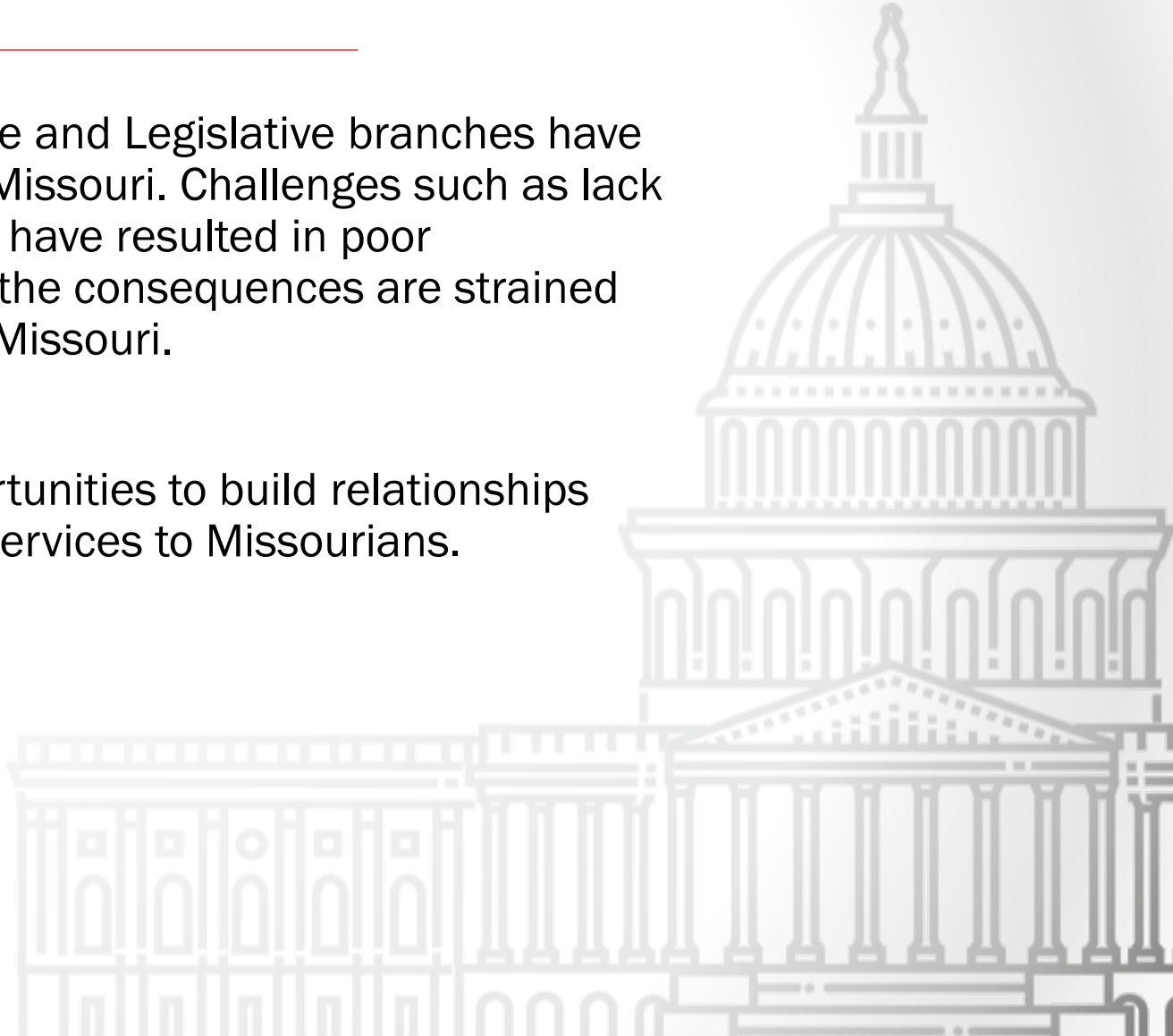
**Darla
Weekley**



Problem Statement

In the past, poor collaboration between the Executive and Legislative branches have complicated the ability to best serve the citizens of Missouri. Challenges such as lack of communication, trust, and mutual understanding have resulted in poor collaboration between the branches. Unfortunately, the consequences are strained relationships and subpar services to the citizens of Missouri.

Our proposal is a **first step approach** to create opportunities to build relationships and improve collaboration in the spirit of improved services to Missourians.



Ripped from the Headlines

'I think you're lying': Missouri lawmakers demand change in _____ agency

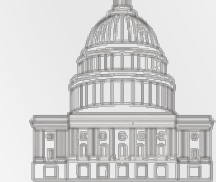
'They're never going to trust us again.' Missouri lawmakers rip clawback of benefits

'I expect change': Lawmakers hope new leadership jumpstarts reform at troubled agency

Was MO _____ director doomed from the start? How angry conservatives fueled backlash

Missouri lawmakers warn lack of confidence in _____ could stall funding for major projects

Missouri lawmakers: Trust issues could derail _____ funds



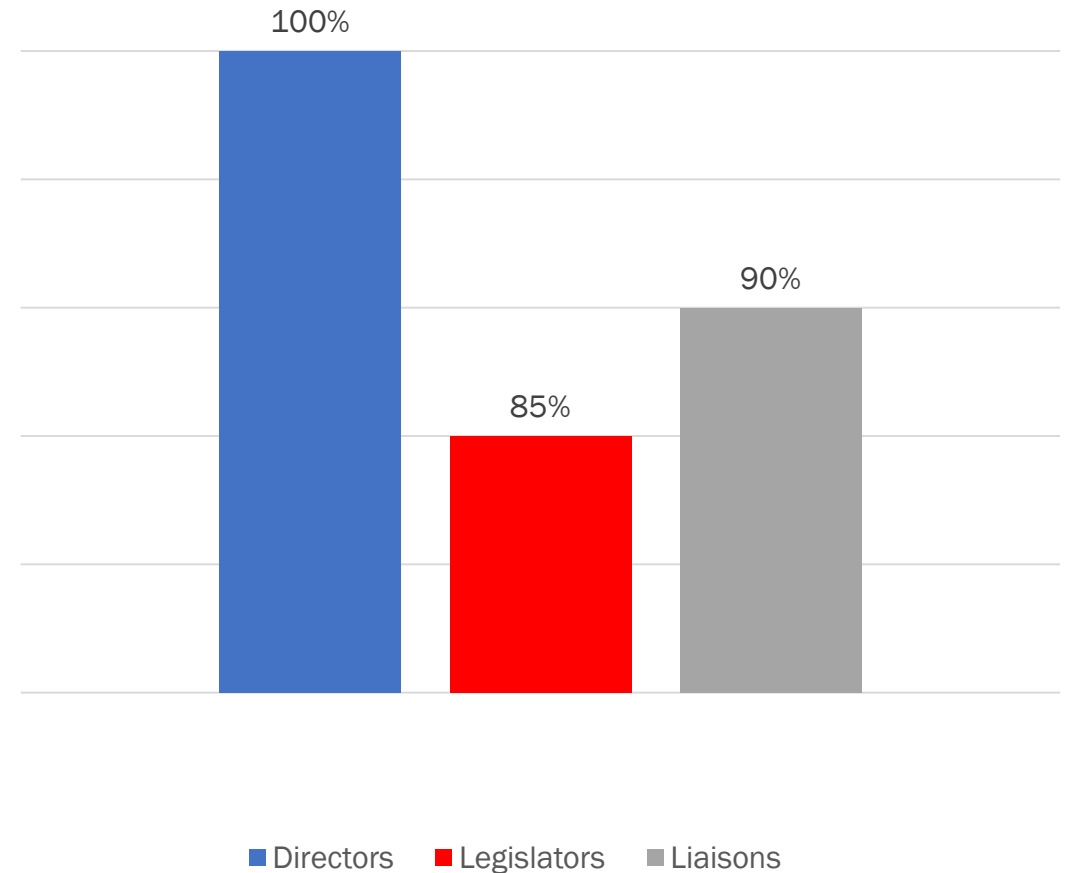
MISSOURI

LEGISLATIVE ACADEMY

Survey Responses

- “Educating legislators on the role and operations of Departments allows for a **more collaborative approach** to interactions that currently trend towards adversarial.”
- “Better depth of knowledge regarding the executive branch would further assist the legislature in **assisting our constituents.**”
- “**I don’t know** how many departments there are.”

Could Benefit From Enhanced Knowledge

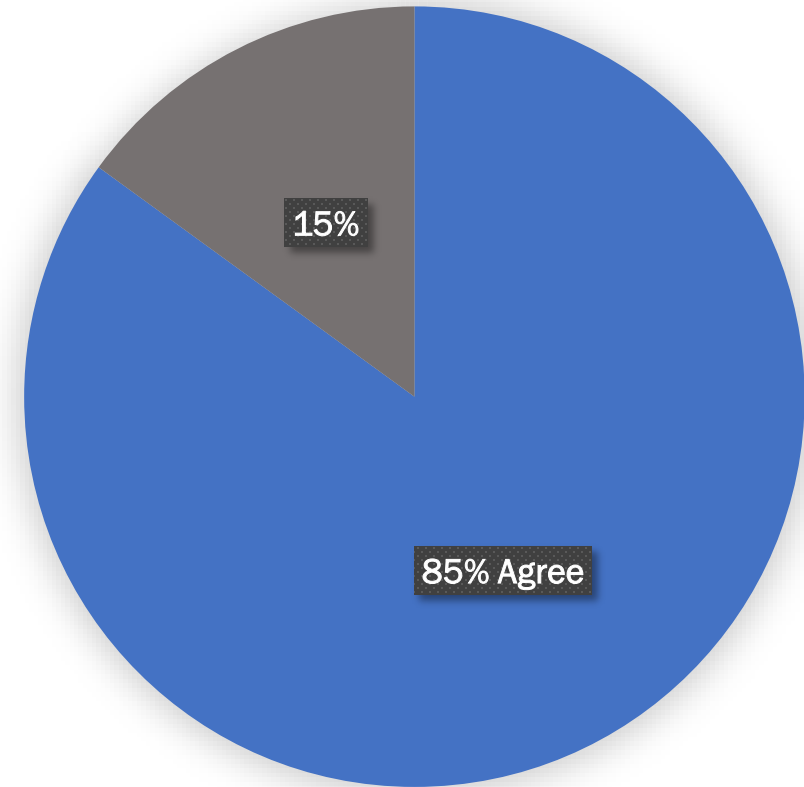


Survey Responses

- “It’s not uncommon for my first interaction with some legislators to be **when something has gone wrong.**”
- “Important to **dispel whatever rumors** or preconceived notions new legislators may have about Government.”
- “Major issues we encounter with legislators is a **lack of trust and the need to build relationships.**”

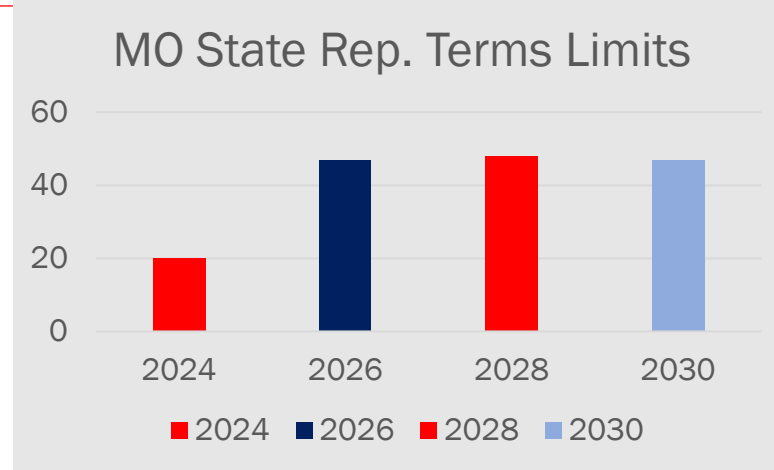


Baseline education would improve efficiency and effectiveness



Legislative Profile

- I want to be an effective legislator but **can only do that with a better understanding** of departmental functionality.”
- “Not sure **what departments are in the executive branch.**”

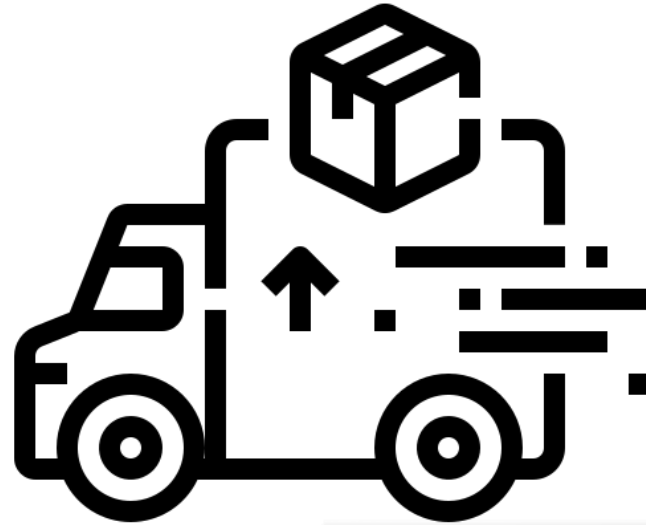


\$51.8 B
Statewide
Budget

2,200 Bills Filed
3982 Fiscal
Notes

In Session
5 months a year

Challenges



Initial Proposal

- Three Day Freshman Legislative Orientation
 - One 20 minute presentation
 - During 2 Breakfasts, 3 Lunches
 - Rotunda Exhibits
 - All three days



Department 101

Mission

Department Purview

Constituent Issues

Brief Budget Overview

Legislative Academy Phase 2

- Capitol talks
- Facility/Office Tours/Field Visit
- District/Region Tours
- Legislative Open Houses



Expected Outcomes

Forge Connections



Collaboration results in easier problem solving



Durable Long Term Relationships



Easier Sessions and change in Status Quo

BETTER SERVICES TO MISSOURIANS!

“I do believe that collaboration between the executive and legislative branches needs to happen. If we all understood the other better we would more **easily find middle ground and agreement.**”

– Budget Director



Let's build relationships that will better serve Missourians

A special thank you to:

Dana Rademan Miller

Nick Omland

Trevor Foley

Adam Albach

Ben Terrell

Logan Hobbs